



*Performance Dashboard  
up to and including February 2023*



# Data Collection

The data for this report is collected from the following sources:

Crime Data:

<https://data.london.gov.uk/dataset/mps-monthly-crime-dashboard-data>

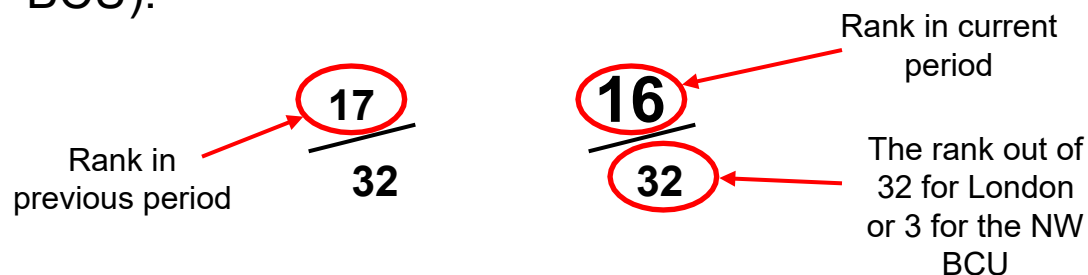
ASB, CCTV and PREVENT Data:  
Barnet Community Safety Team

\*Slides 4-10 will be presented by MPS NW BCU

Slides 11-18 are formed from LBB data (ECINS/CCTV) and will be presented by LBB

# Notes Before We Start

- The lower the ranking the better Barnet is doing when compared with other boroughs across London or in the North West Borough Command Unit (NW BCU).



- Knife crime has previously been reported on as under 25's and non-DV only, this report will note all knife crime with injury.
- In the London comparison 1/32 is the best, 32/32 is the worst. Change is indicated by the Red Amber Green circle.
- In the NW BCS comparison 1/3 is the best, 3/3 is the worst. Change is indicated by the Red Amber Green arrow.

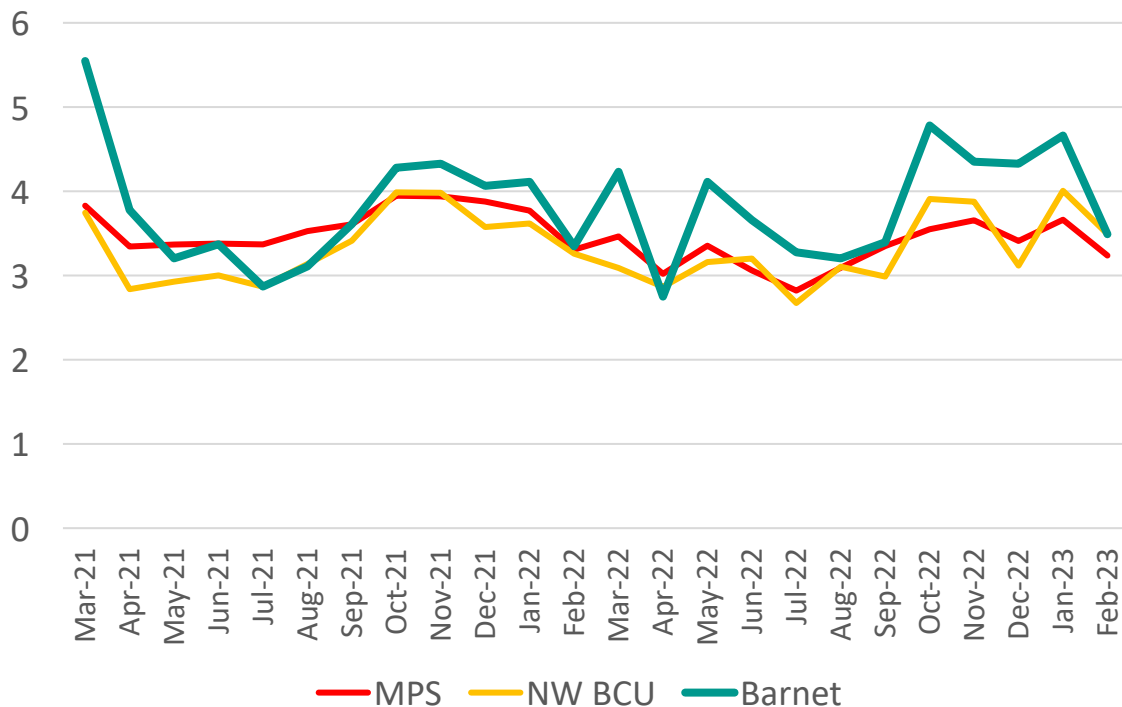
# Domestic Burglary



*In the 3 months of December 2022 to February 2023 (incl.) there were 522 cases of Residential Burglary in Barnet*

## Trend

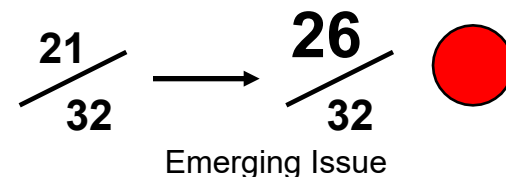
Residential Burglary per 10,000 Population



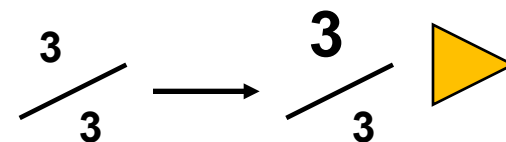
There were 1934 cases of Residential Burglary in Barnet in the 12 months up to February 2023. In the 12 months prior there were 1908. This is an increase of 1.4%

## 3 Month Performance

MPS Comparison (3 Month Period) change from same period last year.



NW BCU Comparison (3 Month Period) change from same period last year.



There were 522 cases of Residential Burglary in the 3 months of December 2022 to February 2023. In the same period 12 months prior there were 482. This is an increase of 8.3%

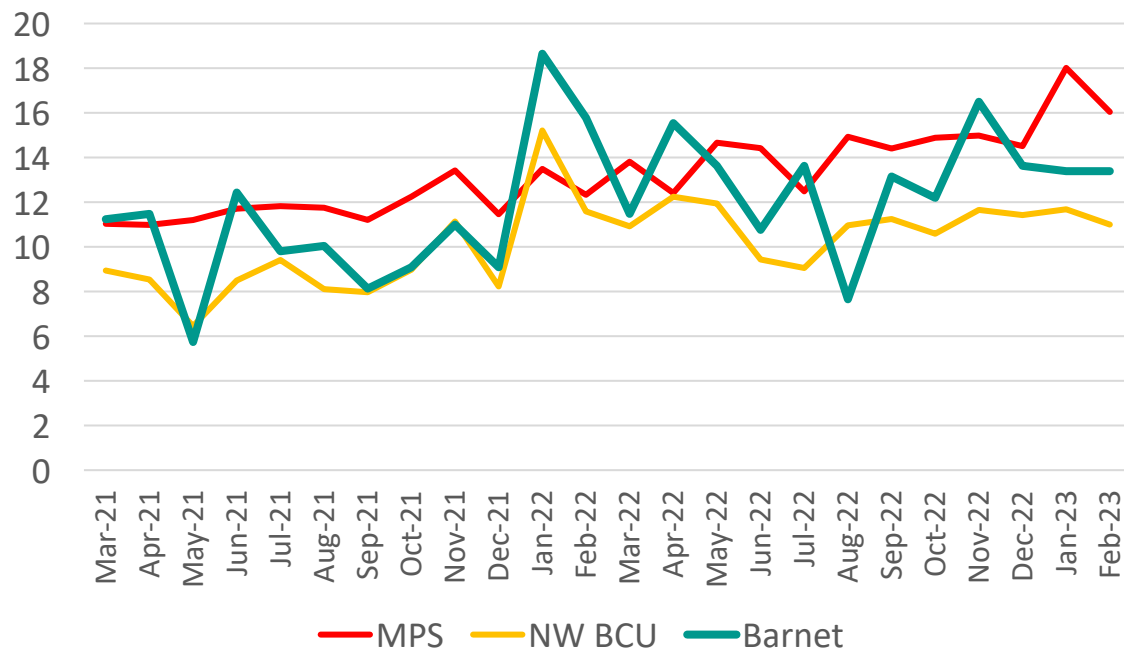
# Burglary Business and Community



*In the 3 months of December 2022 to February 2023 (incl.) there were 169 cases of Non-Residential Burglary in Barnet*

## Trend

Non-Residential Burglary per 100,000 Population



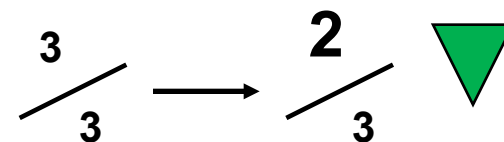
There were 648 cases of Non-Residential Burglary in Barnet in the 12 months up to February 2023. In the 12 months prior there were 554. This is an increase of 17%

## 3 Month Performance

MPS Comparison (3 Month Period) change from same period last year.



NW BCU Comparison (3 Month Period) change from same period last year.



There were 169 cases of Non-Residential Burglary in the 3 months of December 2022 to February 2023. In the same period 12 months prior there were 182. This is a decrease of 7.1%

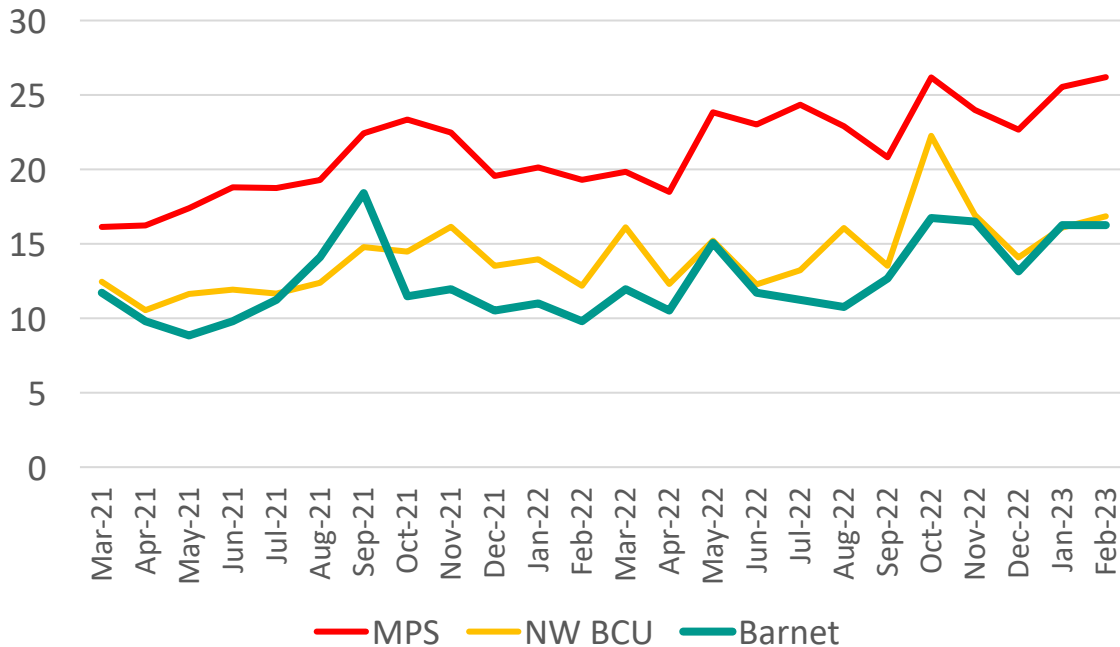
# Robbery of Personal Property



*In the 3 months of December 2022 to February 2023 (incl.) there were 191 cases of Robbery of Personal Property in Barnet*

## Trend

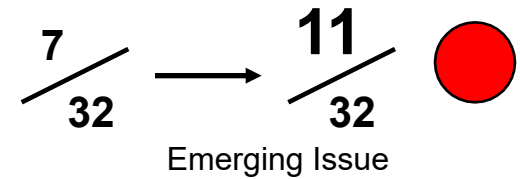
Robbery of Personal Property per 100,000 Population



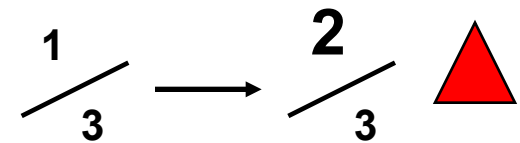
There were 681 cases of Robbery of Personal Property in Barnet in the 12 months up to February 2023. In the 12 months prior there were 580. This is an increase of 17.4%

## 3 Month Performance

MPS Comparison (3 Month Period) change from same period last year.



NW BCU Comparison (3 Month Period) change from same period last year.



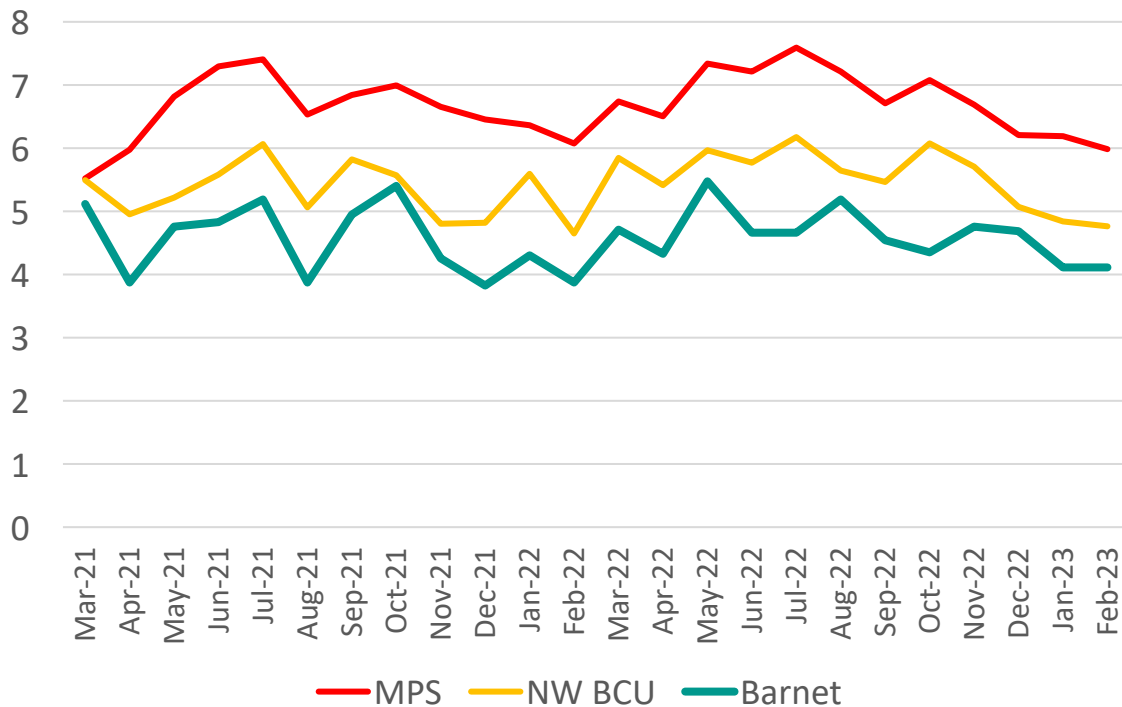
There were 191 cases of Robbery of Personal Property in the 3 months of December 2022 to February 2023. In the same period 12 months prior there were 131. This is an increase of 45.8%

# Violence with Injury

*In the 3 months of December 2022 to February 2023 (incl.) there were 540 cases of Violence with Injury in Barnet*

## Trend

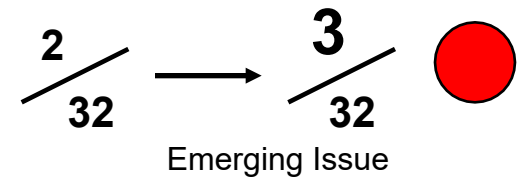
Violence with Injury per 10,000 Population



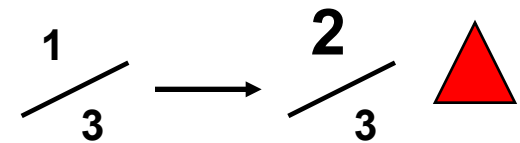
There were 2325 cases of Violence with Injury in Barnet in the 12 months up to February 2023. In the 12 months prior there were 2269. This is an increase of 2.5%

## 3 Month Performance

MPS Comparison (3 Month Period) change from same period last year.



NW BCU Comparison (3 Month Period) change from same period last year.



There were 540 cases of Violence with Injury in the 3 months of December 2022 to February 2023. In the same period 12 months prior there were 502. This is an increase of 7.6%

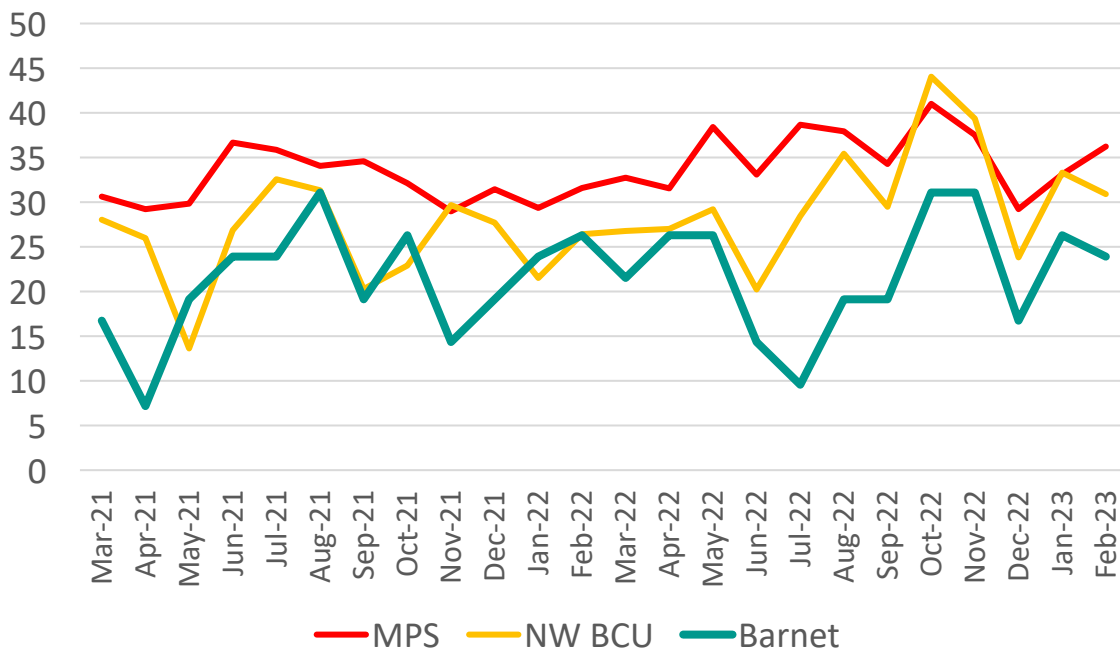
# Knife Crime With Injury



*In the 3 months of December 2022 to February 2023 (incl.) there were 22 cases of Knife Crime With Injury in Barnet*

## Trend

Knife Crime With Injury per 1,000,000 Population



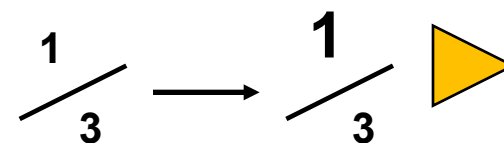
There were 93 cases of Knife Crime With Injury in Barnet in the 12 months up to February 2023. In the 12 months prior there were 85. This is an increase of 9.4%

## 3 Month Performance

MPS Comparison (3 Month Period) change from same period last year.



NW BCU Comparison (3 Month Period) change from same period last year.



There were 22 cases of Knife Crime With Injury in the 3 months of December 2022 to February 2023. In the same period 12 months prior there were 22. This is a decrease of 0%

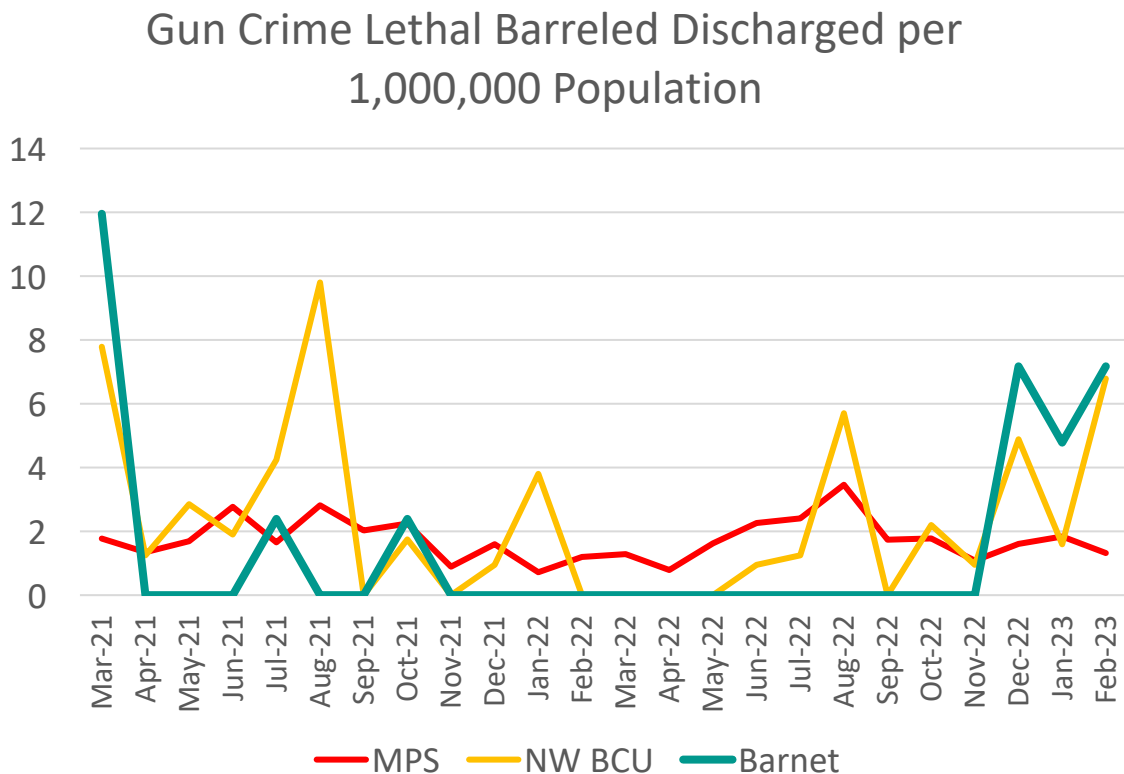


# Gun Crime Lethal Barreled Discharged



*In the 3 months of December 2022 to February 2023 (incl.) there were 8 cases of Gun Crime Lethal Barreled Discharged in Barnet*

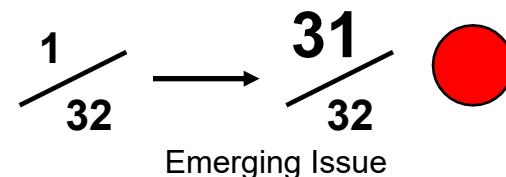
## Trend



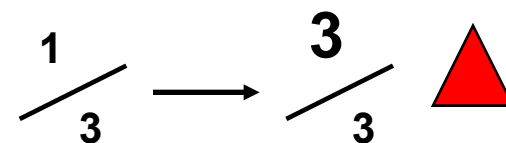
There were 8 cases of Gun Crime Lethal Barreled Discharged in Barnet in the 12 months up to February 2023. In the 12 months prior there were 7. This is an increase of 14.3%

## 3 Month Performance

MPS Comparison (3 Month Period) change from same period last year.



NW BCU Comparison (3 Month Period) change from same period last year.



There were 8 cases of Gun Crime Lethal Barreled Discharged in the 3 months of December 2022 to February 2023. In the same period 12 months prior there were 0.\*

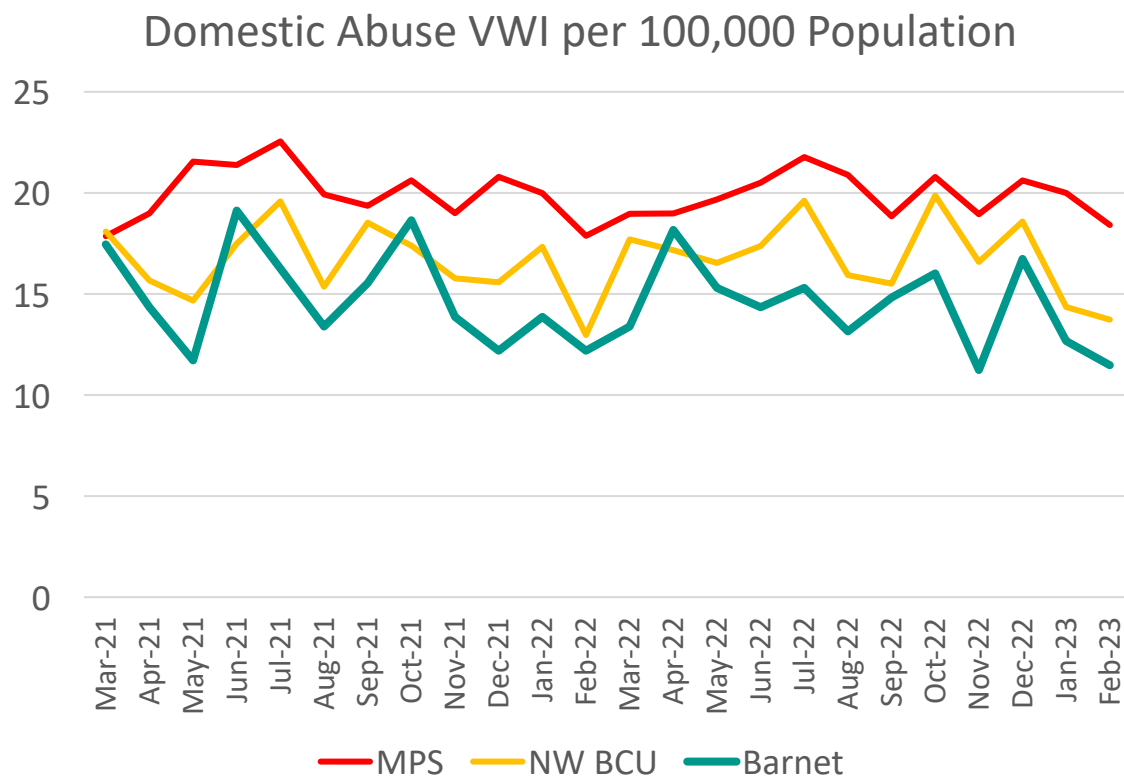
9 \*It is not possible to calculate the percentage increase for Gun Crime for this period as the starting point is zero.

# Domestic Abuse Violence With Injury (VWI)



*In the 3 months of December 2022 to February 2023 (incl.) there were 171 cases of Domestic Abuse VWI in Barnet*

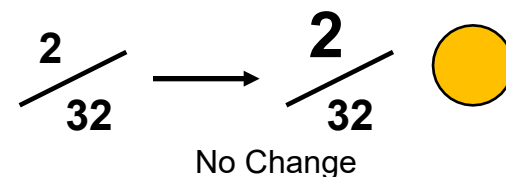
## Trend



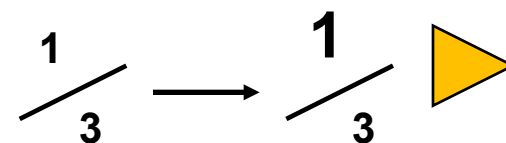
There were 722 cases of Domestic Abuse VWI in Barnet in the 12 months up to February 2023. In the 12 months prior there were 747. This is a decrease of 3.3%

## 3 Month Performance

MPS Comparison (3 Month Period) change from same period last year.



NW BCU Comparison (3 Month Period) change from same period last year.



There were 171 cases of Domestic Abuse VWI in the 3 months of December 2022 to February 2023. In the same period 12 months prior there were 160. This is an increase of 6.9%

# Anti-Social Behaviour – Cases

Data is the 3 months of December 2022 to February 2023 (incl.)

## ASB Tools and Powers Outcomes: December 2022-February 2023

Month	Injunction	CBO	CPN Written Warning	CPN	CPN Breached	PSPO	PCO
December 2022	0	0	7	2	0	1	1
January 2023	0	0	9	1	0	0	1
February 2023	0	0	9	0	0	9	1

### Key

CPN Written Warning - Community Protection Notice Written Warning – precursor to CPN  
 CPN - Community Protection Notice – used to stop a person/bus./org. committing ASB which spoils the community's quality of life

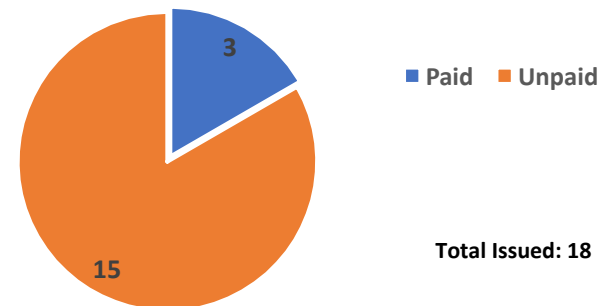
PCO - Premises Closure Order – used to protect victims and communities by closing premises that are causing nuisance or disorder

CBO - Criminal Behaviour Order – available on conviction of a criminal offence, used for the most serious and persistent offenders.

PSPO – Public Space Protection Order - enforced within Barnet from December 2022

## Fixed Penalty Notices: 3 Months to February 2023

FPN Data 3 Months to Feb 2023



## Community Trigger\*: 3 Months to February 2023

There was **1** Community Trigger application received during the 3 months to February 2023.

This was: **Accepted**

\*Community Triggers give victims and communities the right to request a review of their case (where the local threshold is met), to bring agencies together to take a joined up, problem solving approach for the victim.

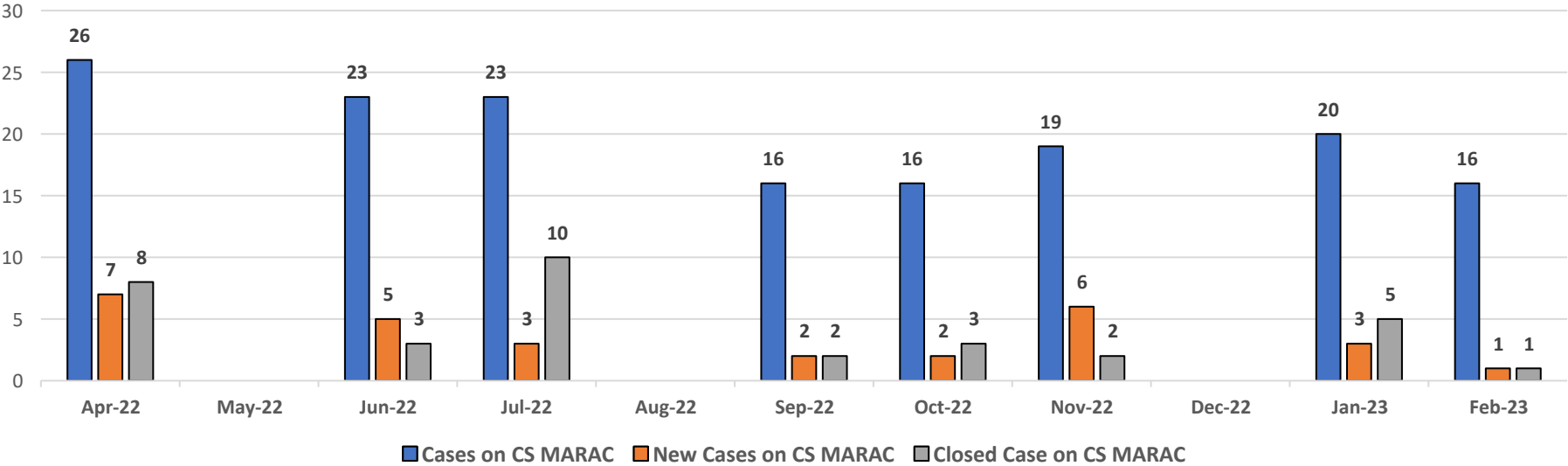
# Anti-Social Behaviour - Community Safety MARAC (Multi-Agency Risk Assessment Conference) Cases



Data is from April 2022-February 2023 incl.

## Community Safety MARAC Cases (April 2022- February 2023)

CS MARAC Cases: April-February 2022/23



Between April 2022 - February 2022:

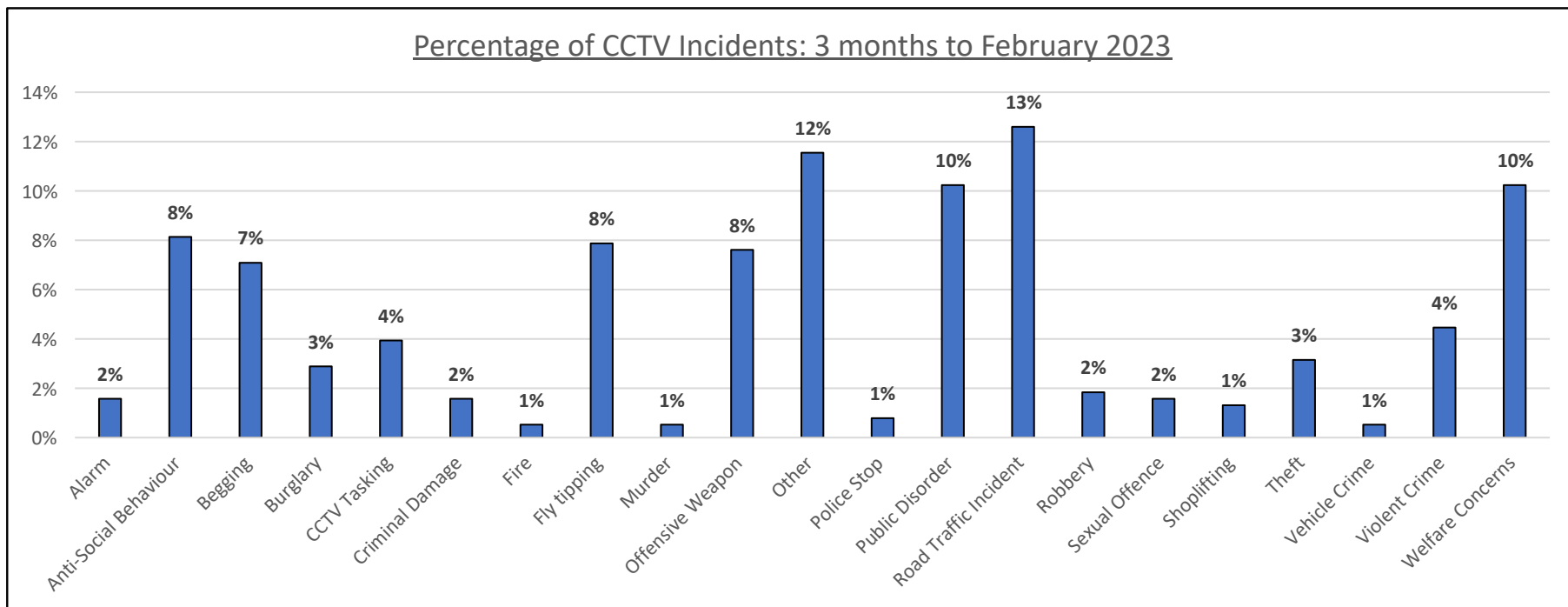
- Total CS MARAC cases average approx. 20 per month (ongoing cases, subject to actions from CS MARAC panel/partners)
- New CS MARAC cases average approx. 4 per month
- Closed CS MARAC cases average approx. 4 per month
- The CS MARAC is held every 6 weeks therefore there was no CS MARAC in May 2022, Aug 2022 and Dec 2022.

# CCTV Recorded Incidents



For the 3 months of December 2022 to February 2023 (incl.) there were 381 incidents captured by CCTV in Barnet

## CCTV by Incident Type: 3 months of December 2022 to February 2023



\* Other refers to incidents of vandalism and fraud

In the 3 months to February 2023:

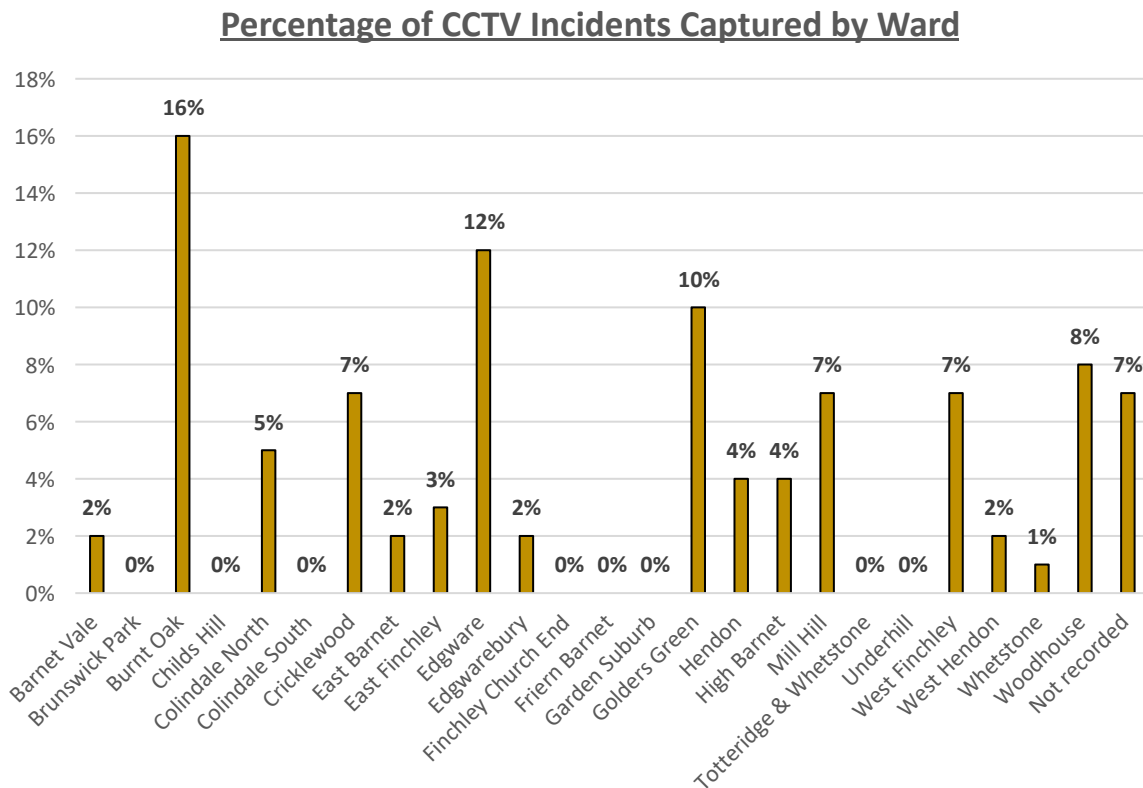
- 13% of CCTV incidents involved a Road Traffic Incident
- 10% of CCTV incidents involved Public Disorder
- 10% of CCTV incidents involved a Welfare Concern
- 8% of CCTV incidents involved Anti-Social Behaviour
- 8% of CCTV incidents involved Fly Tipping
- 8% of CCTV incidents involved Offensive Weapons

# CCTV Recorded Incidents: By Ward

For the 3 months of December 2022 to February 2023 (incl.) there were 381 incidents captured by CCTV in Barnet

## CCTV Incidents by Ward: 3 months of December 2022 to February 2023

Ward	Number of Incidents	% of incidents
Barnet Vale	9	2%
Brunswick Park	1	0%
Burnt Oak	62	16%
Childs Hill	0	0%
Colindale North	18	5%
Colindale South	1	0%
Cricklewood	27	7%
East Barnet	6	2%
East Finchley	10	3%
Edgware	45	12%
Edgwarebury	8	2%
Finchley Church End	0	0%
Friern Barnet	1	0%
Garden Suburb	0	0%
Golders Green	40	10%
Hendon	16	4%
High Barnet	16	4%
Mill Hill	27	7%
Totteridge & Whetstone	0	0%
Underhill	0	0%
West Finchley	27	7%
West Hendon	6	2%
Whetstone	4	1%
Woodhouse	30	8%
No ward/Left Blank	27	7%
<b>Grand Total</b>	<b>381</b>	<b>100%</b>



The largest percentage of CCTV incidents were captured in Burnt Oak (16%), Followed by Edgware (12%), then Golders Green (10%).

# CCTV Recorded Incidents by Ward

For the 3 months to February 2023 there were 381 incidents captured by CCTV in Barnet

## Number of CCTV Incidents by Ward: 3 months to February 2023

	Alarm	Anti-Social Behaviour	Begging	Burglary	CCTV Tasking	Criminal Damage	Fire	Fly tipping	Murder	Offensive Weapon	Other	Police Stop	Public Disorder	Road Traffic Incident	Robbery	Sexual Offence	Shoplifting	Theft	Vehicle Crime	Violent Crime	Welfare Concerns	Total
<b>LBB Ward</b>																						
Barnet Vale	0	1	0	0	0	0	0	0	0	0	1	0	2	0	0	0	2	0	0	2	1	9
Brunswick Park	0	0	0	1	0	0	0	0	0	0	0	0	0	0	0	0	0	0	0	0	0	1
Burnt Oak	0	3	1	4	1	1	0	17	0	7	3	1	5	3	2	4	0	1	2	2	7	62
Childs Hill	0	0	0	0	0	0	0	0	0	0	0	0	0	0	0	0	0	0	0	0	0	0
Colindale North	0	3	0	0	0	1	0	0	2	6	2	0	3	1	0	0	0	0	0	0	0	18
Colindale South	0	1	0	0	0	0	0	0	0	0	0	0	0	0	0	0	0	0	0	0	0	1
Cricklewood	0	0	2	4	0	1	1	7	0	1	2	0	2	1	0	1	0	0	0	1	4	27
East Barnet	0	0	0	0	0	0	0	0	0	0	1	0	1	3	1	0	0	0	0	0	0	6
East Finchley	0	0	0	0	0	0	0	0	0	0	2	0	0	3	0	0	0	2	0	1	2	10
Edgware	1	6	1	0	2	2	1	1	0	6	9	0	5	4	0	0	0	3	0	1	3	45
Edgwarebury	0	1	0	0	1	0	0	0	0	1	0	0	0	3	0	0	0	0	0	0	2	8
Finchley Church End	0	0	0	0	0	0	0	0	0	0	0	0	0	0	0	0	0	0	0	0	0	0
Friern Barnet	0	0	0	0	0	0	0	0	0	0	0	0	0	0	0	0	1	0	0	0	0	1
Garden Suburb	0	0	0	0	0	0	0	0	0	0	0	0	0	0	0	0	0	0	0	0	0	0
Golders Green	0	6	3	1	1	1	0	0	0	2	0	0	5	7	1	0	1	2	1	2	7	40
Hendon	1	1	0	0	0	0	0	0	0	1	2	0	2	2	2	0	0	1	1	1	2	16
High Barnet	0	2	0	0	0	0	0	0	0	1	0	0	6	2	0	1	1	0	0	1	2	16
Mill Hill	2	2	11	1	1	0	0	3	0	2	2	0	0	2	0	0	0	0	0	0	1	27
Totteridge & Whetstone	0	0	0	0	0	0	0	0	0	0	0	0	0	0	0	0	0	0	0	0	0	0
Underhill	0	0	0	0	0	0	0	0	0	0	0	0	0	0	0	0	0	0	0	0	0	0
West Finchley	0	3	5	0	0	0	0	0	0	2	4	1	2	1	0	0	0	2	0	3	4	27
West Hendon	1	0	0	0	0	0	0	0	0	0	1	1	1	2	0	0	0	0	0	0	0	6
Whetstone	0	0	0	0	1	0	0	1	0	0	0	0	1	1	0	0	0	0	0	1	0	4
Woodhouse	0	2	4	0	1	0	0	1	0	0	8	0	3	6	1	0	0	0	0	2	2	30
No Ward/Left Blank	1	0	0	0	7	0	0	0	0	0	7	0	1	8	0	0	0	1	0	0	2	27
<b>Grand Total</b>	<b>6</b>	<b>31</b>	<b>27</b>	<b>11</b>	<b>15</b>	<b>6</b>	<b>2</b>	<b>30</b>	<b>2</b>	<b>29</b>	<b>44</b>	<b>3</b>	<b>39</b>	<b>48</b>	<b>7</b>	<b>6</b>	<b>5</b>	<b>12</b>	<b>2</b>	<b>17</b>	<b>39</b>	<b>381</b>

In Burnt Oak, the largest number of CCTV incidents captured was for Fly tipping.

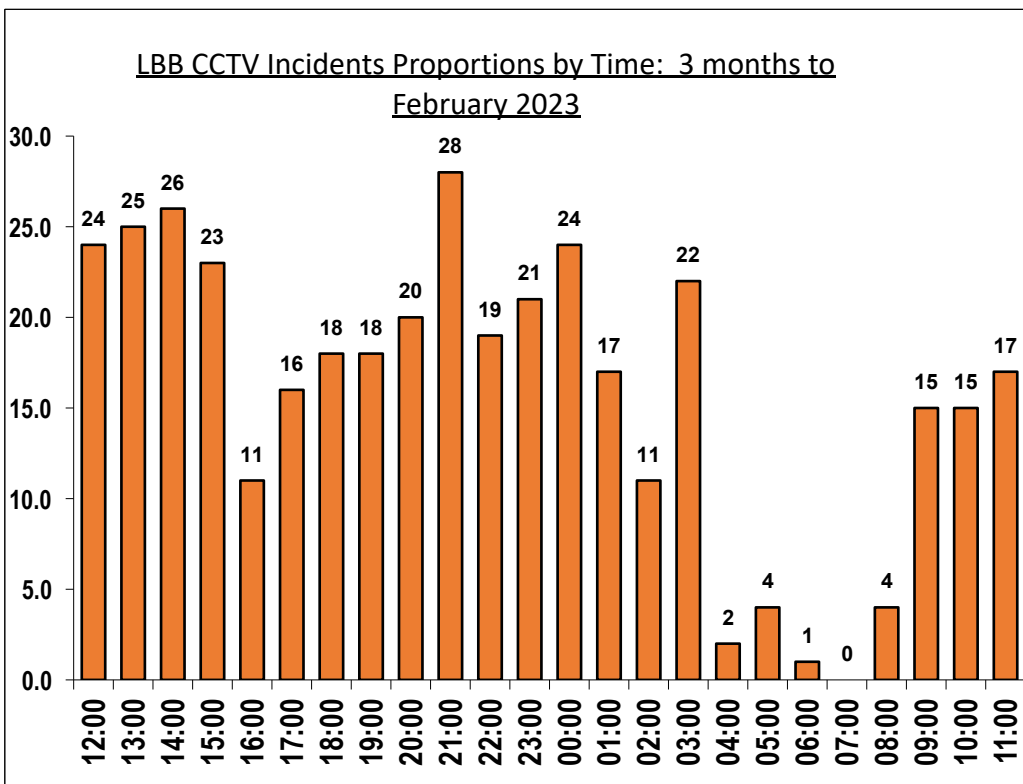
In Edgware, it was for 'Other reasons' (e.g. vandalism and fraud) followed by Anti- Social Behaviour, and Offensive Weapons.

In Golders Green the largest number of CCTV incidents captured was for Road Traffic Incidents and Welfare Concerns.

# CCTV Recorded Incidents cont.

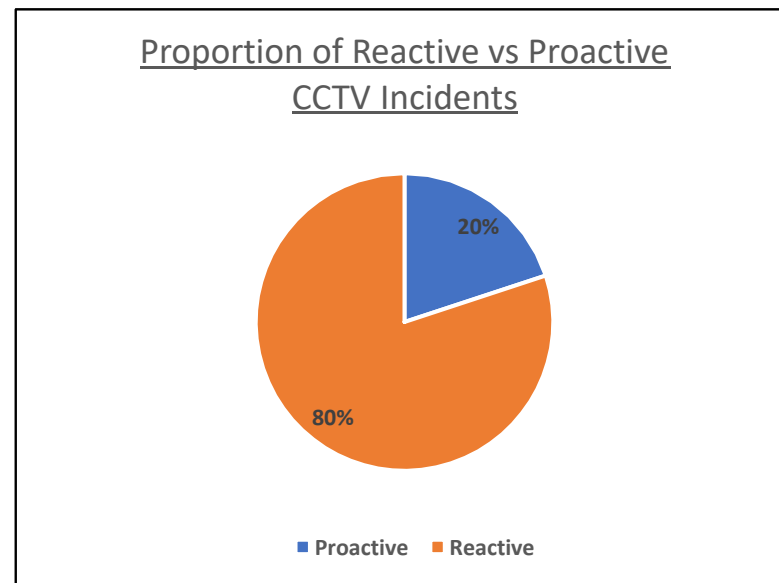
In the 3 months of December 2022 to February 2023 (incl.) there were 381 incidents captured by CCTV in Barnet

## Time of Incidents: 3 months to February 2023



- The above chart shows the quietest periods are between 04:00am and 08:00am.

## Proactive or Reactive Incidents: 3 months to February 2023



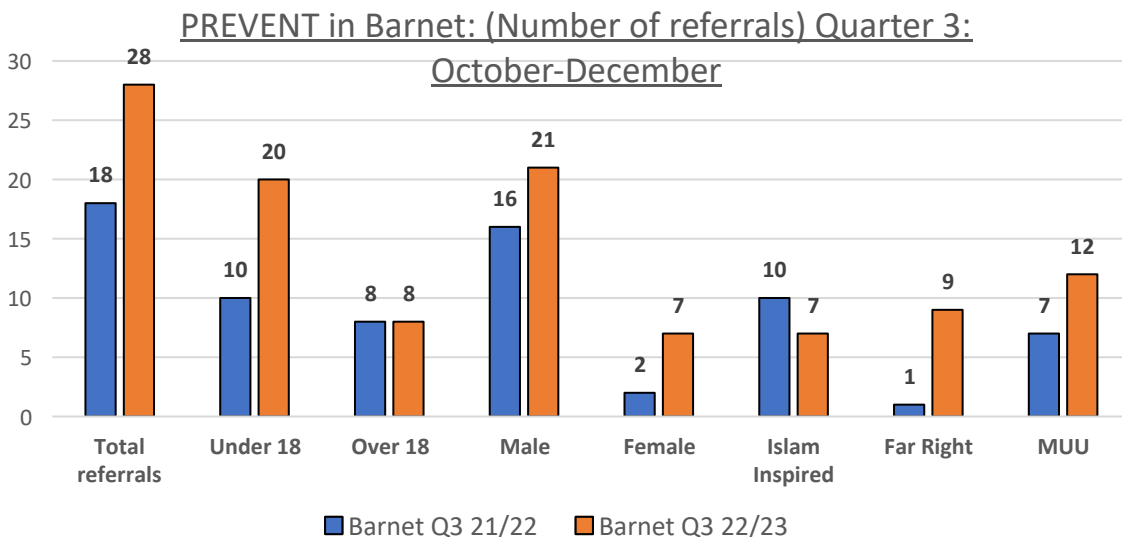
- The above pie chart shows the majority of CCTV incidents captured are reactive. (The police or the council have asked the control room for assistance.)



# PREVENT: Number of Referrals Barnet Qtrly Comparison

Quarter 3 (October-December) 2021/22 and 2022/23

## Trend



There were 28 PREVENT referrals in Barnet over Qtr3. In the same quarter in the previous year, there were 18.

**This is an increase of 56%**

In Barnet over the two comparable quarters of 2021/22 and 2022/23, the data shows the majority of referrals involve:

- Male (75%)
- Under 18 (71%)
- MUU inspired (43%)

## Quarter 3 2022/23 compared to 2021/22 (October-December)

Prevent In Barnet	Barnet Q3 21/22	Barnet Q3 22/23	% change
Total referrals	18	28	55.6%
Under 18	10	20	100.0%
Over 18	8	8	0.0%
Male	16	21	31.3%
Female	2	7	250.0%
Islam Inspired	10	7	-30.0%
Far Right	1	9	800.0%
MUU	7	12	71.4%

In quarter 3 compared to same period the previous year:

- Total referrals increased by 55.6%
- There was a 250% rise in female referrals (up from 2 in 2021/22 to 7 in 2022/23)
- Referrals of under 18's have increased by 100%
- Islam Inspired referrals decreased by 30%
- Mixed, Unstable and Unclear (MUU) referrals increased by 71.4%

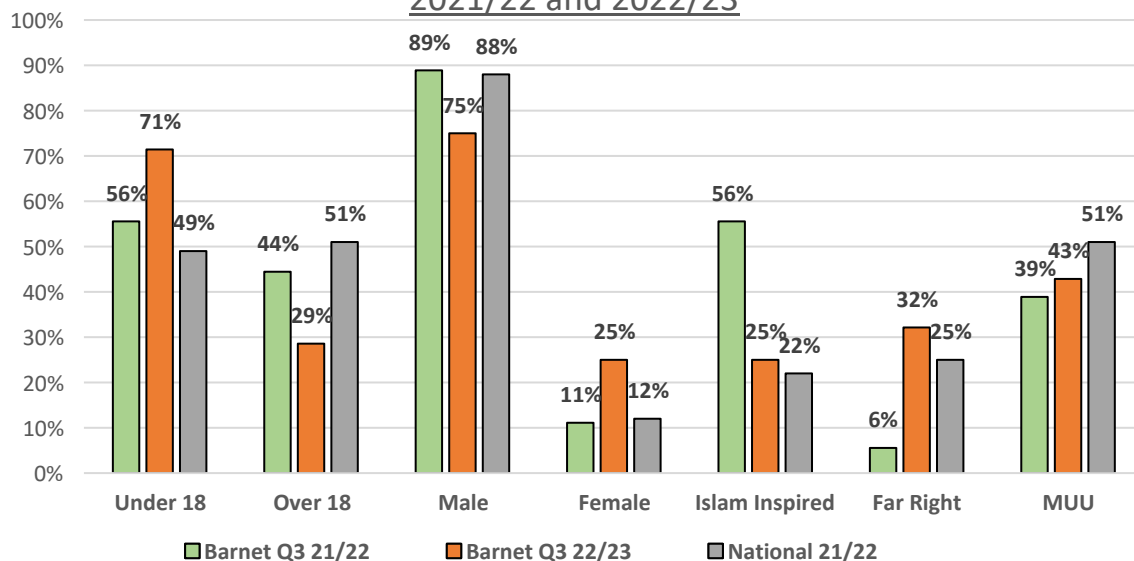
# PREVENT: Percentage of Referrals - National Comparison



Quarter 3 October-December 2021/22 and 2022/23

## Trend

PREVENT in Barnet: (Percentage of referrals) Quarter 3  
2021/22 and 2022/23



## Barnet vs National

Total Referrals Percentage Point Difference: Barnet Quarter 3 2022/23 vs National 2021/22.

Percentage point difference	Qtr3 2022/23 vs National 2021/22
Under 18	22%
Over 18	-22%
Male	-13%
Female	13%
Islam Inspired	3%
Far Right	7%
MUU	-8%

During quarter 3 in Barnet, compared to the National 2021/22 average there was:

- +22% point difference in under 18 referrals
- 13% difference in Female referrals
- +3% point difference in Islam inspired referrals
- -8% point difference in Mixed, Unstable and Unclear referrals (MUU)